



## INSTALLATION, OPERATION, & MAINTENANCE MANUAL



**MODEL:**

**MPJ-1500  
1,500 LB CAPACITY MULTIPURPOSE JACK**

**⚠ FOLLOW THIS MANUAL CAREFULLY TO ENSURE THE MACHINE WILL FUNCTION CORRECTLY AND PROVIDE MANY YEARS OF DEPENDABLE SERVICE. FAILURE TO FOLLOW THESE INSTRUCTIONS AND SAFETY WARNINGS MAY RESULT IN PERSONAL INJURY OR PROPERTY DAMAGE. USE OF STRAPS IS RECOMMENDED - SOLD SEPARATELY. KEEP THIS MANUAL IN A SAFE DRY PLACE FOR FUTURE REFERENCE.**



**TITAN MARKETING, LLC**

PO Box 7069 Greenwood, IN 46142  
1.888.908-4826 FAX (317) 215.2770  
[www.titanlifts.com](http://www.titanlifts.com)

To Our Valued Customers:

Thank you for purchasing a Titan Lifts® product. We hope this high quality equipment provides you with years of dependable service.

It is unfortunate that rare situations may occur with the products you purchase from Titan Lifts®. We value your business as well as the trust you have and need to maintain your relationship with us. Titan Lifts® carries liability coverage that may protect our customers if a situation does occur. However, as in all accidents there must be proof of liability for a claim to be made. Our insurance company requires the following procedures be observed in order to consider a claim:

- A. The claimant must contact the Titan Lifts® distributor immediately with the facts of the situation.
- B. If any equipment is damaged, including vehicles or shop equipment, Titan Lifts® must be given the opportunity to send an impartial representative to the site for proper assessment of the situation.
- C. The Vehicle cannot be moved until either an impartial representative has reviewed the accident or clear and precise pictures are taken that reflect all the pertinent information for an impartial representative to be able to access the information from a distance. Titan Lifts® or its representatives must approve the pictures before anything can be moved.
- D. If any potential liability is determined on behalf of Titan Lifts®, two estimates must be submitted for damages to be reimbursed.

It is imperative that the claimant complies with these procedures, because without proper assessment of the situation a claim will be denied.

#### ARBITRATION NOTICE

The installation or use of this equipment shall constitute an acknowledgement that the user agrees to resolve any and all disputes or claims of any kind whatsoever, which relate in any way to the equipment, by way of binding arbitration, not litigation. No suit or legal action may be filed in any state or federal court. Any arbitration shall be governed by the Federal Arbitration Act, and administered by the American Mediation Association, Indianapolis Indiana. The maximum amount that an arbitrator may award and all damages shall not exceed the retail value of this equipment.

#### WARRANTY NOTICE

This equipment must be assembled and used in the manner according to the documentation provided to be covered by warranty.

Damaged or missing components must be reported within 72 hours of receipt to your freight carrier and to the distributor. Claims must be filed to cover cost.

If you have any questions or if we can be of any further assistance, please don't hesitate to contact a Titan Lifts® representative at 1-888-908-4826. Thank you for the opportunity to continue to serve your lift equipment needs.

# CONTENTS

<b>INSTRUCTIONS .....</b>	<b>4</b>
<b>SAFETY PRECAUTIONS .....</b>	<b>4</b>
<b>PRODUCT DESCRIPTION &amp; FEATURES.....</b>	<b>5</b>
<b>ASSEMBLY INSTRUCTIONS.....</b>	<b>6</b>
<b>ASSEMBLY INSTRUCTIONS.....</b>	<b>7</b>
<b>MAINTENANCE.....</b>	<b>7</b>
<b>LUBRICATION.....</b>	<b>7</b>
<b>STORING.....</b>	<b>7</b>
<b>PARTS DIAGRAM .....</b>	<b>8</b>
<b>RUST PREVENTION .....</b>	<b>9</b>
<b>SPECIFICATIONS.....</b>	<b>9</b>
<b>TROUBLESHOOTING.....</b>	<b>9</b>
<b>PURGING AIR FROM HYDRAULIC SYSTEM .....</b>	<b>9</b>

# INSTRUCTIONS



**WARNING: READ ENTIRE MANUAL AND COMPLY WITH ALL SAFETY AND SERVICE PRECAUTIONS. DEATH, PERSONAL INJURY AND/OR PROPERTY DAMAGE MAY OCCUR IF INSTRUCTIONS ARE NOT FOLLOWED CAREFULLY.**

## SAFETY PRECAUTIONS

1. This Jack is rated for a maximum of 1500 pounds. DO NOT exceed the rated capacity. Overloading may cause damage to the jack and cause it to fail.
2. ONLY use jack on a hard level surface that is capable of supporting the vehicle.
3. Lift only on areas of vehicle as specified by the vehicle manufacturer.
4. ALWAYS use tie-down straps to secure the vehicle to the jack. NEVER move vehicle with jack if straps are not in place or secure.
5. ALWAYS use the height lock bar when the vehicle is raised to prevent the vehicle from dropping accidentally.
6. ALWAYS lower the vehicle to the lowest possible jack position BEFORE attempting to dolly or move it.
7. DO NOT make any alterations to this product.
8. ALWAYS inspect the jack before each use.
9. DO NOT use if leaking fluid and/or broken, bent, cracked or otherwise damaged parts are noted.
10. Immediately after raising vehicle, ensure that Height Lock Bar is engaged.
11. ALWAYS wear safety glasses when operating this product. NEVER place yourself under or in a position around a raised vehicle where if it came loose from the jack and fell off of the jack, it could cause serious bodily injury.
12. Only trained people should operate the lift.
13. DO NOT move the lift while loaded.
14. Keep hands, tools, and other extremities from any moving parts.
15. Maintain a safe working environment. The work area should be clean, dry, clutter free and sufficiently lit.
16. Wear proper safety attire. Do not wear loose fitting clothing while operating lift, long hair and sleeves should be secured.
17. Keep children and bystanders away from work area. Do not let children operate or play on lift.
18. Do not use if under the influence of drugs or alcohol. Operator must be alert at all times when using heavy lift equipment.
19. Never operate the lift with someone on it.
20. Use this lift only for the work it is intended. Do not use this product for an application for which it was not designated. Misuse can lead to personal injury and/or property damage.



## **WARNING**



The warnings, precautions and instructions in this manual cannot cover all possible conditions and situations that may occur. The operator must understand that the operator must supply common sense and examine caution factors when using this product to determine safety in all circumstances being used.

## **PRODUCT DESCRIPTION & FEATURES**

This jack (see Figs. 1, 1 A, and 2) has special built-in features that make it ideal for performing minor repairs, oil changes, cleanups and more. These features include:

- 1) 1500 pound load capacity to lift most motorcycles and ATVs.
- 2) Wide lifting range with a fast-action hydraulic pump with foot pedal (J) (see Fig. 2) for easy lifting from 2  $\frac{7}{8}$ " to 16  $\frac{1}{2}$ " above front of jack base.
- 3) Three position Height Lock Bar provides secure locking at three lift heights: 11  $\frac{3}{4}$ ", 14  $\frac{1}{4}$ ", and 16  $\frac{1}{2}$ ". (see Fig. 1).



**WARNING: UPON RAISING VEHICLE, THE JACK MUST IMMEDIATELY BE LOCKED INTO ONE OF THE THREE LIFT HEIGHTS.**

- 4) Precision controlled foot release (K) (Fig. 2) for lowering the vehicle.
- 5) Can be used as a dolly to move your vehicle to a convenient location for working or storage.
- 6) T-Handle (Fig. 1) for added control when dollying vehicle into working or storage location.
- 7) Includes two ratcheting tie-down straps (see Fig. 1 A) to help secure the vehicle.
- 8) Locking rear casters to increase stability (see Fig. 1).
- 9) Includes two height adapter plates (V) (see Fig. 2), to add additional lifting height to accommodate high-chassis vehicles.

### **PLEASE READ THE FOLLOWING CAREFULLY**

THE MANUFACTURER AND/OR DISTRIBUTOR HAS PROVIDED THE PARTS LIST AND ASSEMBLY DIAGRAM IN THIS MANUAL AS A REFERENCE TOOL ONLY. THE MANUFACTURER OR DISTRIBUTOR DOES NOT MAKE ANY REPRESENTATION OR WARRANTY OF ANY KIND TO THE BUYER THAT HE OR SHE IS QUALIFIED TO MAKE ANY REPAIRS TO THE PRODUCT, OR THAT HE OR SHE IS QUALIFIED TO REPLACE ANY PARTS OF THE PRODUCT. THE MANUFACTURER AND/OR DISTRIBUTOR EXPRESSLY STATES THAT ALL REPAIRS AND PARTS REPLACEMENTS SHOULD BE PERFORMED BY CERTIFIED AND LICENSED TECHNICIANS, AND NOT BY THE BUYER. THE BUYER ASSUMES ALL RISK AND LIABILITY ARISING OUT OF HIS OR HER REPAIRS TO THE ORIGINAL PRODUCT OR REPLACEMENT PARTS THERETO, OR ARISING OUT OF HIS OR HER INSTALLATION OF REPLACEMENT PARTS THERETO.

Product's Serial Number: \_\_\_\_\_

**Note:** If product does not have a serial number, record the month and year of purchase instead.

**Note:** Some parts are listed and shown for illustration purposes only, and are not available individually as replacement parts.

Fig. 1

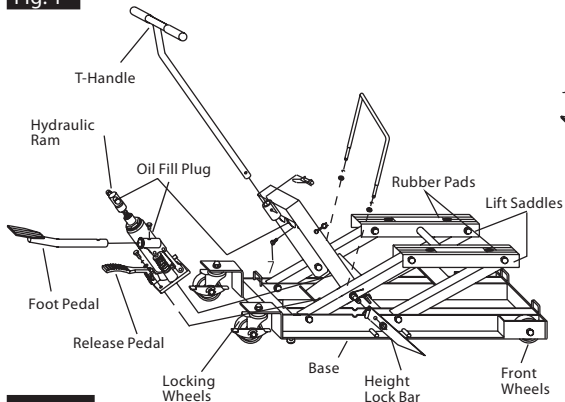


Fig. 1A

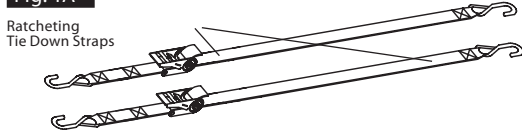
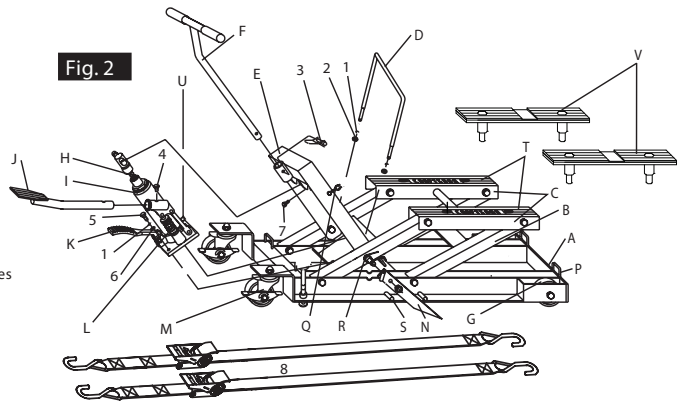


Fig. 2



DESCRIPTION	QTY
A base	1
B link	1
C lift saddle	1
D high lock release	1
E connecting rod	1
F t-handle	1
G front wheel assy	2
H return spring	1
I hydraulic ram	1
J foot pedal	1
K release pedal	1
L pump spring	1
M locking rear caster assy	2
N height lock bar	2

DESCRIPTION	QTY
P loops	4
Q clip	1
R height lock springs	1
S lock positing ridge	3
T rubber pads	2
U oil fill plug	1
V height adapters	2

**HARDWARE**

DESCRIPTION	QTY
1 spring washer Ø 8	4
2 nut M8	2
3 cotter pin	1
4 bolt M8 x 12	1
5 bolt M8 x 25	2
6 washer Ø 8	2
7 bolt M6 x 15	1
8 tie down straps (1 in. x 15 ft.)	2

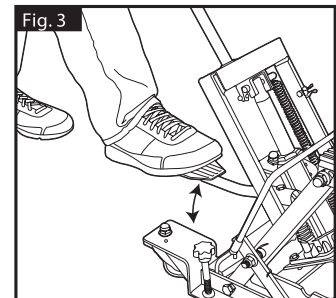
**ASSEMBLY INSTRUCTIONS**

(see Fig.2)

1. Attach Hydraulic Ram (I) to connecting rod (E) using M6 x 15 Bolt (7); proceed to attach Ram onto Base (A) using 2 M8 x 25 Hex Bolts (5), 2 Spring Washers (1) and 2 Washers (6). Tighten all fasteners thoroughly.
2. Insert Foot Pedal Arm (J) into the sleeve of Hydraulic Ram (J) and secure with M8 x 12 hex bolt (4).
3. Attach Height Lock Release (D) to Height Lock Bar using 2 Spring Washers Ø 8 (1) and 2 Nuts M8 (2).
4. Attach T-Handle (F) to Connecting Rod (E) with Cotter Pin (3).
5. Make sure that all connections are tightened thoroughly.

**TO RAISE THE VEHICLE (see Figs. 2,3)**

1. Place jack on a hard level surface.
2. To avoid item from slipping during the raising operation, ONLY lift on points of vehicle specified by vehicle manufacturer in the vehicle's operator's manual.
3. Place the jack under the vehicle so that the Lift Saddle (C) (see Fig. 2) is positioned under the vehicle's lift point.
4. Pump the foot pedal (J) (see Fig. 3) until the lift saddle (C) comes in contact with the vehicle to be lifted; proceed to lock wheel casters by pushing down with foot on tab marked LOCK, ALWAYS check to be sure that the saddle and the vehicle are positioned correctly BEFORE raising the jack.
5. Use Foot Pedal to raise vehicle. Pump Foot Pedal until tip of Height Lock Bar moves past desired lock position ridge. The tip of the Height Lock Bar will sink into position just behind the ridge. Depress release pedal slightly so that the tip moves snugly against ridge.
6. Apply tie-down Straps (see page 5, securing the vehicle) once vehicle has been raised to the desired working height. Thoroughly tighten the two tie-down straps.
7. Stabilize loaded jack on a hard surface by locking rear casters (M) (see Fig. 2).



**TO LOWER THE VEHICLE (see Fig. 2)**

1. Raise the jack slightly and pull back on the Height Lock Release to release Height Lock Bar.
2. Fasten the Height Lock Release (D) to the Clip (Q).
3. Press the Release Pedal (K) very gently to lower the Saddle and vehicle.

**⚠ WARNING: TIE-DOWN STRAPS WILL BECOME LOOSE AND VEHICLE WILL BE RELEASED UPON LOWERING THE VEHICLE.**

# ASSEMBLY INSTRUCTIONS

with the two ratcheting Tie-Down Straps (see Fig. 4, 4A)  
Secure one strap hook end to the Handle (A). Arrange strap over vehicle (see Fig. 4A). Secure other strap hook end to Front Wheel Axle of Jack.

With the Handle (A) in the closed position, take long strap end and slip it through the insertion slot in spindle.

Pull back over spindle.

3. Tighten the strap by ratcheting the handle back and forth until the vehicle is secure. In order to keep the strap in position while tightening, it may be necessary to take up the excess slack by hand until the strap is tight.
4. To lock ratchet, place Handle (A) in the closed position.



**DANGER: TO AVOID DAMAGE TO THE VEHICLE, DO NOT OVER-TIGHTEN STRAP.**

## RELEASING THE VEHICLE FROM THE TWO RATCHETING TIE-DOWN STRAPS (see fig. 4B)

1. Hold the ratchet in one hand and with the other hand pull back on Release Latch (C).
2. While holding Release Latch (C) back, open Handle (A) fully past the locking gears until Latch (C) locks in a completely open position or until the load releases.



**WARNING: THE VEHICLE WILL RELEASE AT THIS POINT.**

3. To remove strap, pull up on ratchet and slide strap out of Spindle (B).



**WARNING: FOR THE TWO RATCHETING TIE-DOWN STRAPS**

1. DO NOT use the two tie down straps for towing vehicles or to hold or suspend human weight.
2. DO NOT use pliers or any other tools to operate the ratcheting handle (A), (see Fig. 4B). Use hand power only.
3. Protect strap webbing from sharp edges, heat and acid. Replace strap webbing if it is cut, worn or damaged. Inspect strap webbing, hooks and hardware before each use.

## MAINTENANCE

(see Fig. 1,2)

### TO ADD HYDRAULIC JACK OIL

With lift saddles fully lowered and the jack on level ground, unscrew and remove oil fill plug. Using a good grade of SAE 5 W hydraulic jack oil, fill the oil reservoir to the bottom of the threads in the oil filler hole. Replace and tighten the oil fill plug. DO NOT ALLOW dirt or debris to enter the system.

### TO REPLACE HYDRAULIC JACK OIL

1. Open the release valve by pressing down on the release pedal (K). Unscrew and remove oil fill plug.
2. Turn entire jack over so that all of the old oil will drain out of the oil fill hole. NOTE: When draining oil, use a proper container and ALWAYS follow ALL local and state waste disposal guidelines.
3. After all of the old oil has drained out of the jack, turn the jack back over to a level position to fill with new oil.
4. Rapidly pump foot pedal (J), 6 to 8 full strokes to release any pressurized air.
5. Using a good grade of SAE 5W hydraulic jack oil, fill the reservoir to the bottom of the threads in the oil fill hole. DO NOT ALLOW dirt and debris to enter the system
6. Replace and tighten oil fill plug.

## LUBRICATION

Use a good grade of lubricating oil on all moving parts when needed.

## STORING

When jack is not in use, or when storing the jack, ALWAYS have the lift saddles in the lowest (down) position.

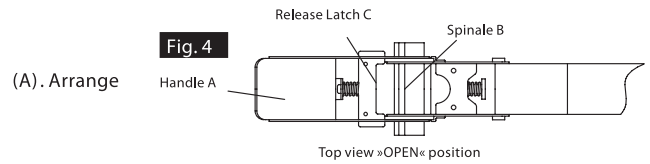


Fig. 4

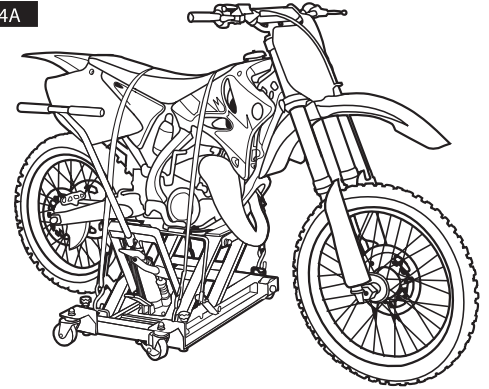
Handle A

Release Latch C

Spindle B

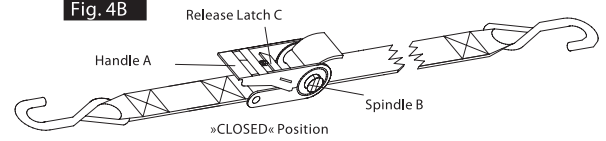
Top view »OPEN« position

Fig. 4A



(C) locks in

Fig. 4B



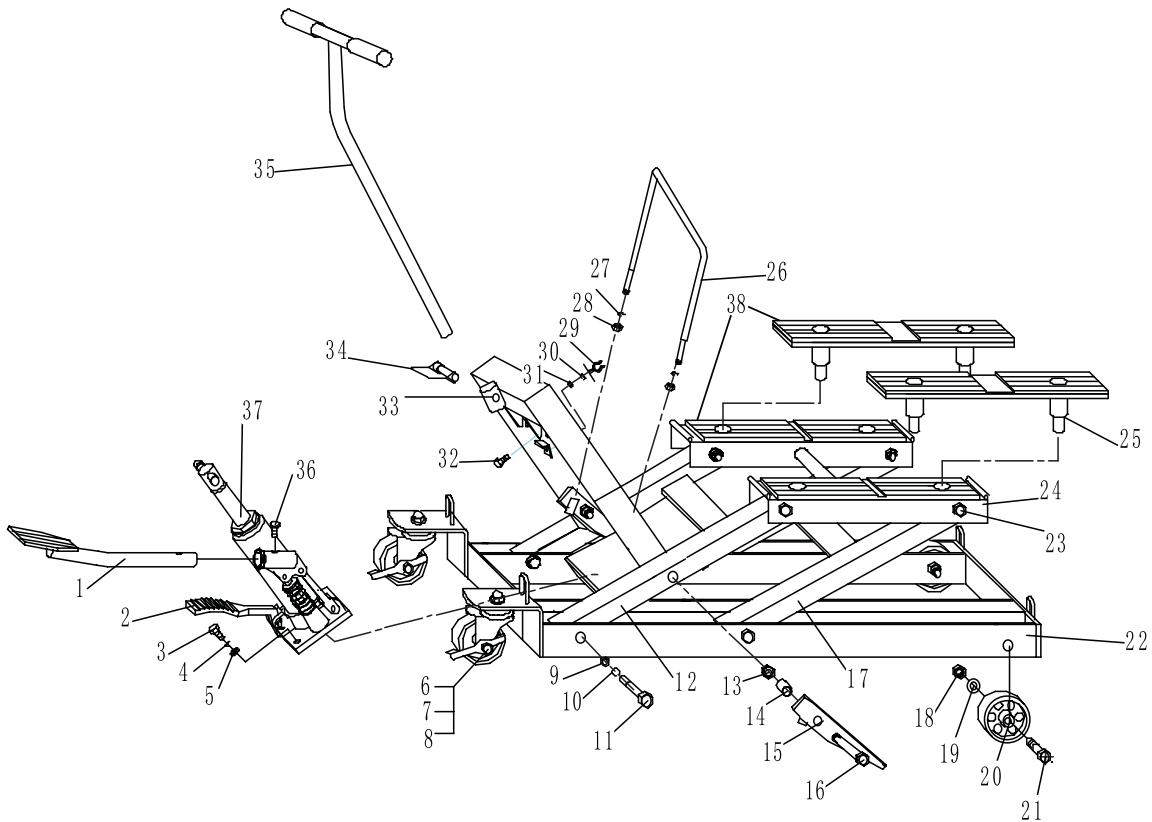
Handle A

Release Latch C

Spindle B

»CLOSED« Position

# PARTS DIAGRAM



NO.	DESCRIPTION	QTY	NO	DESCRIPTION	QTY
01	Foot Pedal	1	20	Front Wheel	2
02	Foot Release Pedal	1	21	Spindle	2
03	M*825 Hexagon Socket Screw	2	22	Base	1
04	Lock Washer, $\Phi$ 8	2	23	M12*40 Hexagon Bolt	2
05	Washer, $\Phi$ 8	2	24	M12*30 Hexagon Bolt	2
06	Rear Wheel Set	2	25	Tray	2
07	Cap Nut, M12	2	26	Safety Pole	1
08	Lock Washer, $\Phi$ 8	4	27	Washer, $\Phi$ 8	2
09	Hex Nut, M12	4	28	Hex Nut, M8	2
10	Lock Washer, M12	4	29	Stator	1
11	M12*65 Hexagon Bolt	4	30	Washer, $\Phi$ 6	2
12	Rear Rocker	1	31	Hex Nut, M6	1
13	Locknut, M12	2	32	M5 Safety Bolt	1
14	Bushing	2	33	Lifting Unit	1
15	Safety Plate	2	34	Handle Pin	1
16	M12*55 Hexagon Bolt	2	35	Handle	1
17	Front Rocker	1	36	M8*12 Hexagon Bolt	1
18	Hex Nut, M10		37	Pump Unit	1
19	Lock Washer, $\Phi$ 10		38	Rubber Pad (With Holes)	4



## **RUST PREVENTION**

Check power unit (hydraulic ram) see parts list Fig. 2 letter (I) page 4, every two months or sooner based on use for any rust or corrosion. Clean and wipe down with oil cloth.

## **SPECIFICATIONS**

Maximum load capacity: 680 kg (1500 lb.)

Locking Positions: 11 ¾" , 14 ¼ " and 16 ½ "

Size: 35 ½" x 17 x 14"

Weight: 77 lbs.

## **TROUBLESHOOTING**

PROBLEM	CAUSE	SOLUTION
Jack will not lower completely	1. Air in hydraulic System 2. Release valve is stuck	1. Purge air from hydraulic System.* 2. Transfer weight load and clean valve.
Jack will not lift to full height	1. Oil level is low. 2. Air in hydraulic system	1. Fill to recommended level. 2. Purge air from hydraulic System.*
Weak Lifting	1. Air in hydraulic System 2. Dirty oil	1. Purge air from hydraulic System.* 2. Change oil. Use SAE 5W
Jack will not lift load	1. Excessive weight 2. Oil level is low	1. Decrease weight or change to a higher capacity jack. 2. Fill to recommended level.

\*For purging air, see Purging Air Instructions below.

## **PURGING AIR FROM HYDRAULIC SYSTEM**

During shipment and handling, air may get trapped in the hydraulic System which can interfere with the jack's lifting performance. Follow these Steps to release the air.

1. Open the release valve by pressing down on the release pedal (K) (see Fig. 1 and 2).
2. Remove the oil fill plug (see Fig. 1).
3. Pump the foot pedal (J) (see Fig. 1 and 2) 6 to 8 times to release any pressurized air that may be trapped in the oil reservoir (hydraulic System).
4. Be sure oil level is just below the threads in the oil fill plug hole. If oil needs to be added follow the instructions on page 6.
5. Replace and tighten oil fill plug.





## LIMITED WARRANTY

The **Titan 2 Post lifts and 4 Post lifts** are backed by a standard **1 year** replacement parts warranty and a **5 year** structural warranty from the date of purchase, to the original purchaser only. The **1 year** replacement parts warranty covers power units, hydraulic cylinders, and all other assembly components such as, but not limited to: turn plates, slip plates, cables, chains, valves, switches etc. This does not cover normal wear items such as but not limited to rubber lifting pads and nylon slide blocks. Titan **HD2P-9000ACE-D** and **HD2P-9000AFE 2 Post lifts** are backed by a **2 year** replacement parts warranty and a **5 year** structural warranty from the date of purchase, to the original purchaser only. The **2 year** replacement parts warranty covers power units, hydraulic cylinders, and all other assembly components such as, but not limited to: turn plates, slip plates, cables, chains, valves, switches etc. This does not cover normal wear items such as but not limited to rubber lifting pads and nylon slide blocks.

**Titan Mid Rise Scissor lifts** are backed by a standard **1 year** replacement parts warranty and a **5 year** structural warranty from the date of purchase, to the original purchaser only. The **1 year** replacement parts warranty covers power units, hydraulic cylinders, and all other assembly components such as, but not limited to: turn plates, slip plates, cables, chains, valves, switches etc. This does not cover normal wear items such as but not limited to rubber lifting pads and nylon slide blocks.

**Titan Standard Duty and Heavy Duty motorcycle lifts** are backed by a standard **1 year** replacement parts warranty from the date of purchase, to the original purchaser only. The **1 year** replacement parts warranty covers power units, hydraulic cylinders, pneumatic cylinders, and all other assembly components such as, but not limited to: cables, caster wheels, valves, switches, wheel vises etc. This does not cover normal wear items such as but not limited to rubber wheel vise pads.

**Titan Bulldog Moto Cradle Wheel Chock** is warrantied for replacement parts, only to the original purchaser, for a period of **2 years** from the date of purchase.

**XL Tool by Titan Wheel Service Machines and Helper Arm Assemblies** are backed by a standard **1 year** replacement parts warranty from the date of purchase, to the original purchaser only. The **1 year** replacement parts warranty covers internal boards, motors, pneumatic cylinders, and all other assembly components such as, but not limited to: cabinet, switches, valves, fittings etc. This does not cover normal wear items such as but not limited to: rubber pads, jaw protectors, air hoses, quick nut assemblies.

**Titan shop equipment products and accessories** are warrantied for replacement parts only to the original purchaser for a period of **90 days** from the date of purchase. This **90 day** replacement parts warranty covers products such as but not limited to: EZ -Mover Jacks, Mini Jacks, tie down products, wheel service accessories, Bulldog Moto Cradle Wheel Chock accessories, dollies, stands, Light Duty Motorcycle Lifts, etc.

For **all** warranty considerations, Titan Marketing, LLC will supply replacement parts only during the warranty period. The original purchaser is responsible for all shipping, handling, and any labor charges incurred. All defective parts must be returned to Titan for inspection and examination. Any parts that are found to be defective will be replaced or repaired to proper working order. Other items not listed above may be considered general wear parts and therefore, will not be covered under warranty. These warranties **do not** extend to **defects** caused by ordinary wear, abuse, misuse, shipping damage, improper installation, voltage or lack of required maintenance. Titan Marketing, LLC is **not** to be held responsible for any **failure** that results from an accident, purchaser/operator abuse, neglect, or failure to operate products in accordance with instructions provided in the owner's manual(s) supplied. Damage caused by rain, excessive humidity, corrosive environments or other contaminants are not covered under warranty. **THESE WARRANTIES DO NOT EXTEND TO ANY COSMETIC DEFECT NOT INTERFERING WITH EQUIPMENT FUNCTIONALITY OR ANY INCIDENTAL, INDIRECT, OR CONSEQUENTIAL LOSS, DAMAGE, OR EXPENSE THAT MAY RESULT FROM ANY DEFECT, FAILURE OR MALFUNCTION OF A TITAN MARKETING LLC PRODUCT OR THE BREACH OR DELAY IN PERFORMANCE OF THE WARRANTY.**

# WARRANTY REGISTRATION

In order to utilize the warranty on this Titan Lifts product, you must register your product with us. The simplest way to do this is to visit [TITANLIFTS.COM/WARRANTIES](https://www.titanlifts.com/warranties) and submit your information online. If you prefer to send your information through the mail, please fill out the form below and send this page to us at :

**Titan Lifts  
PO Box 7069  
Greenwood, IN 46142**

EQUIPMENT MODEL: \_\_\_\_\_ SERIAL NUMBER: \_\_\_\_\_  
TYPE OF POWER UNIT: \_\_\_\_\_ SERIAL NUMBER: \_\_\_\_\_  
DATE OF PURCHASE: \_\_\_\_\_  
PLACE PURCHASED: \_\_\_\_\_  
NAME: \_\_\_\_\_  
STREET: \_\_\_\_\_  
CITY, STATE, ZIP: \_\_\_\_\_  
PHONE: \_\_\_\_\_  
EMAIL: \_\_\_\_\_

OPT OUT OF PROMOTIONS



In order to receive your warranty, return this card or visit [TITANLIFTS.COM/WARRANTIES](https://www.titanlifts.com/warranties) within 30 days.









 **WARNING** 

The warnings, precautions and instructions in this manual cannot cover all possible conditions and situations that may occur. The operator must understand that the operator must supply common sense and examine caution factors when using this product to determine safety in all circumstances being used.



**TITAN MARKETING, LLC**

PO Box 7069 Greenwood, IN 46142  
1.888.908-4826 FAX (317) 215.2770  
[www.titanlifts.com](http://www.titanlifts.com)

**Patent No.: US 8,104,588 B2  
CA 2,729,670**

**REVISION 1**