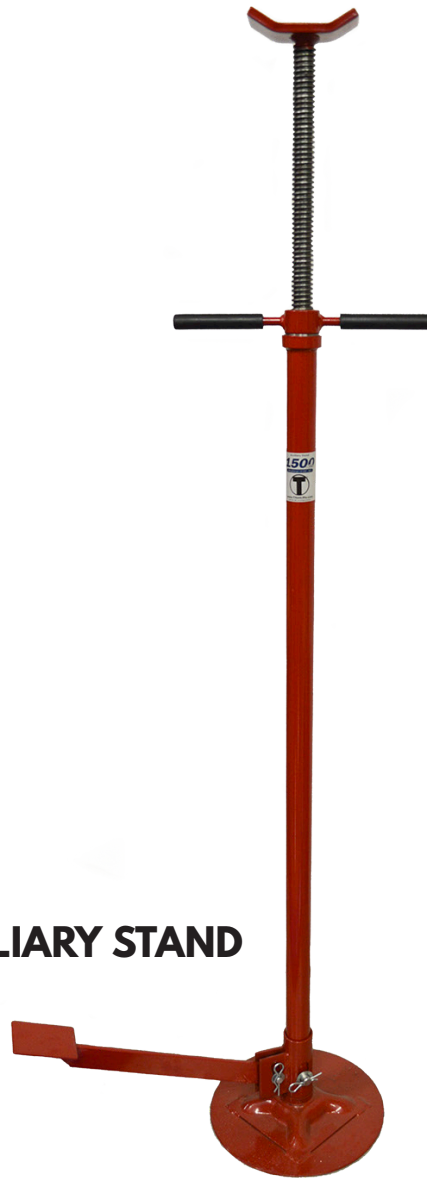




## INSTALLATION, OPERATION, & MAINTENANCE MANUAL



**MODEL:**

**AS-15-FP  
1,500LB CAPACITY AUXILIARY STAND**

**⚠ FOLLOW THIS MANUAL CAREFULLY TO ENSURE THE EQUIPMENT WILL FUNCTION CORRECTLY AND PROVIDE MANY YEARS OF DEPENDABLE SERVICE. FAILURE TO FOLLOW THESE INSTRUCTIONS AND SAFETY WARNINGS MAY RESULT IN PERSONAL INJURY OR PROPERTY DAMAGE. KEEP THIS MANUAL IN A SAFE DRY PLACE FOR FUTURE REFERENCE.**



**TITAN MARKETING, LLC**

PO Box 7069 Greenwood, IN 46142  
1.888.908-4826 FAX (317) 215.2770  
[www.titanlifts.com](http://www.titanlifts.com)

To Our Valued Customers:

Thank you for purchasing a Titan Lifts® product. We hope this high quality equipment provides you with years of dependable service.

It is unfortunate that rare situations may occur with the products you purchase from Titan Lifts®. We value your business as well as the trust you have and need to maintain your relationship with us. Titan Lifts® carries liability coverage that may protect our customers if a situation does occur. However, as in all accidents there must be proof of liability for a claim to be made. Our insurance company requires the following procedures be observed in order to consider a claim:

- A. The claimant must contact the Titan Lifts® distributor immediately with the facts of the situation.
- B. If any equipment is damaged, including vehicles or shop equipment, Titan Lifts® must be given the opportunity to send an impartial representative to the site for proper assessment of the situation.
- C. The Vehicle cannot be moved until either an impartial representative has reviewed the accident or clear and precise pictures are taken that reflect all the pertinent information for an impartial representative to be able to access the information from a distance. Titan Lifts® or its representatives must approve the pictures before anything can be moved.
- D. If any potential liability is determined on behalf of Titan Lifts®, two estimates must be submitted for damages to be reimbursed.

It is imperative that the claimant complies with these procedures, because without proper assessment of the situation a claim will be denied.

#### ARBITRATION NOTICE

The installation or use of this equipment shall constitute an acknowledgement that the user agrees to resolve any and all disputes or claims of any kind whatsoever, which relate in any way to the equipment, by way of binding arbitration, not litigation. No suit or legal action may be filed in any state or federal court. Any arbitration shall be governed by the Federal Arbitration Act, and administered by the American Mediation Association, Indianapolis Indiana. The maximum amount that an arbitrator may award and all damages shall not exceed the retail value of this equipment.

#### WARRANTY NOTICE

This equipment must be assembled and used in the manner according to the documentation provided to be covered by warranty.

Damaged or missing components must be reported within 72 hours of receipt to your freight carrier and to the distributor. Claims must be filed to cover cost.

If you have any questions or if we can be of any further assistance, please don't hesitate to contact a Titan Lifts® representative at 1-888-908-4826. Thank you for the opportunity to continue to serve your lift equipment needs.

# CONTENTS

<b>INSTRUCTIONS .....</b>	<b>1</b>
<b>SAFETY PRECAUTIONS .....</b>	<b>1</b>
<b>ASSEMBLY INSTRUCTIONS.....</b>	<b>2</b>
<b>OPERATING INSTRUCTIONS.....</b>	<b>3</b>
<b>MAINTENANCE .....</b>	<b>3</b>
<b>PARTS DIAGRAM.....</b>	<b>4</b>

# INSTRUCTIONS



**WARNING: READ ENTIRE MANUAL AND COMPLY WITH ALL SAFETY AND SERVICE PRECAUTIONS. DEATH, PERSONAL INJURY AND/OR PROPERTY DAMAGE MAY OCCUR IF INSTRUCTIONS ARE NOT FOLLOWED CAREFULLY.**

## SAFETY PRECAUTIONS

1. Read, study, understand and follow all instructions before using the stand.
2. This stand is designed to assist in stabilizing a vehicle that is raised by an in-ground or above-ground lift. DO NOT use to fully support a vehicle.
3. Inspect the stand before each use. DO NOT use if damaged, altered, modified, in poor condition, or has loose or missing hardware or components. Take corrective action before using the stand.
4. DO NOT use beyond rated capacity. DO NOT shock load.
5. Use stands in PAIRS to stabilize the vehicle before starting repairs.
6. Use ONLY on a hard level surface.
7. DO NOT make any alterations to this product.
8. Wear eye protection that meets ANSI Z 87.1 and OSHA standards.
9. Adequately support the vehicle before starting repairs.
10. Center load on saddle. DO NOT use ends of saddle to stabilize load.
11. Be sure the vehicle and stand are stable before performing any work.
12. This product contains chemicals known to the State of California to cause cancer and birth defects or other reproductive harm. Wash hands thoroughly after handling.
13. Failure to heed these warnings may result in fatal personal injury and/or property damage.
14. Keep hands, tools, and other extremities from any moving parts.
15. Maintain a safe working environment. The work area should be clean, dry, clutter free and sufficiently lit.
16. Wear proper safety attire. Do not wear loose fitting clothing while operating lift, long hair and
17. sleeves should be secured.
18. Keep children and bystanders away from work area. Do not let children operate or play in or near work area.
19. DO NOT use if under the influence of drugs or alcohol. Operator must be alert at all times when using heavy lift equipment.
20. DO NOT use this product for an application for which it was not designated. Misuse can lead to personal injury and/or property damage.



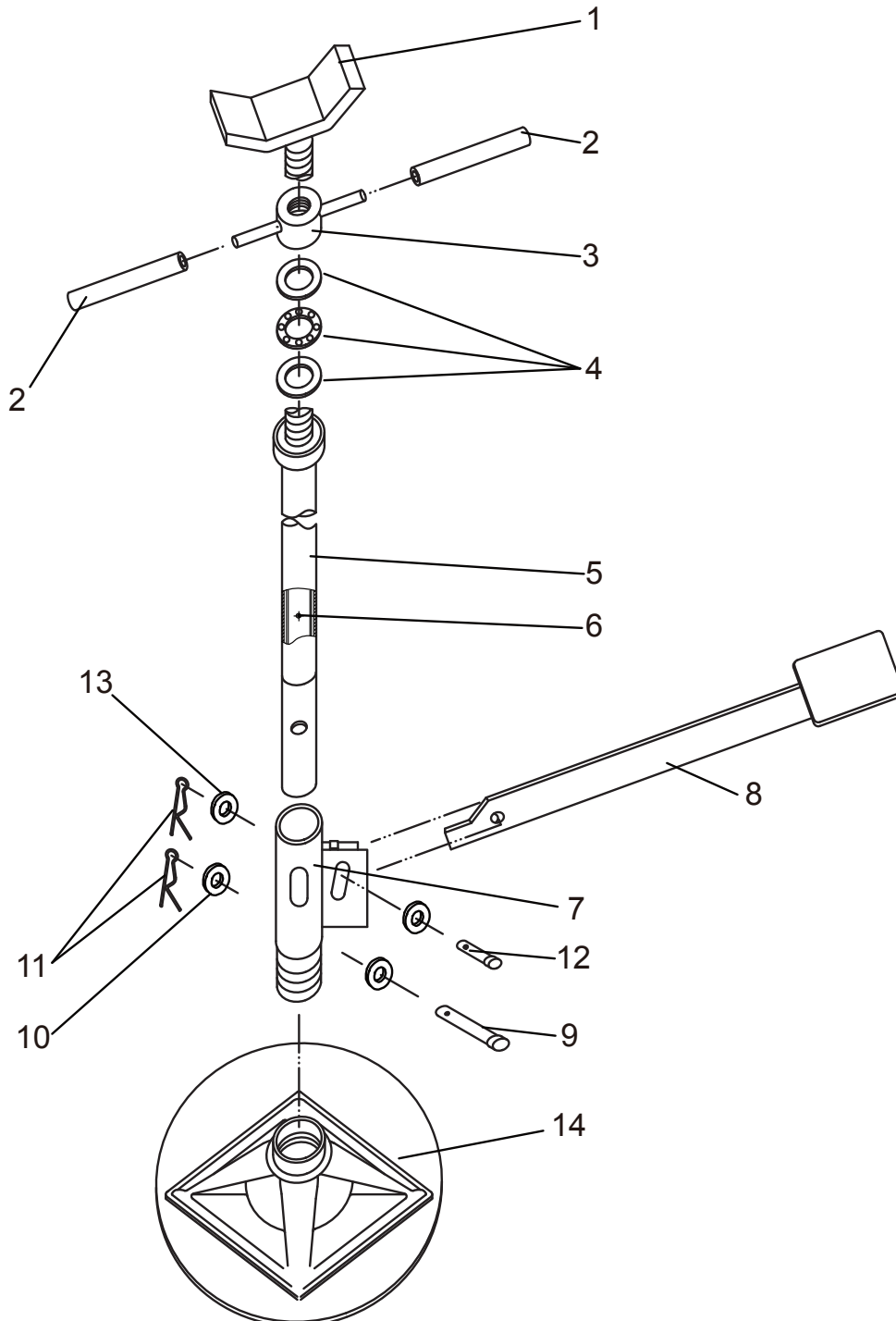
### **WARNING**



The warnings, precautions and instructions in this manual cannot cover all possible conditions and situations that may occur. The operator must understand that the operator must supply common sense and examine caution factors when using this product to determine safety in all circumstances being used.

# ASSEMBLY INSTRUCTIONS

1. Screw the post support in the round base.
2. Thread the large spin handle on the extension screw.
3. Install the bearing assembly in the receiver on top of the support tube.
4. Insert the extension screw assembly through the bearing and into the support tube until the underside of the spin handle rests on the bearing assembly.
5. The model AS-15-FP includes a pedal. Insert the other end of the pedal through the parallel flanges of the post support; raise the pedal high enough so the clevis pin can be installed through the parallel flanges of the post support. Secure the clevis pin with the washers and cotter pin provided.



# OPERATING INSTRUCTIONS

1. Make sure the vehicle is properly supported, stable and at the required work height before positioning the stand(s) under the vehicle component to be supported.
2. Consult the vehicle manufacturer for the proper placement and use of auxiliary stands.
3. Once the stand(s) has been positioned properly under the vehicle, hold the stand's saddle in place with one hand while turning the spin handle in a clockwise direction with the other hand. Remove the one hand from the stand's saddle when it comes close to making contact with the vehicle.
4. Continue turning the stand's spin handle in a clockwise direction until it applies pressure against the component. This pressure should not exceed what is required to support the vehicle. Excessive pressure might cause the vehicle or its component to become unstable. Additional precaution should be taken when using a stand equipped with a foot pedal which can raise the stand's saddle another inch more in height and produce as much as 400 lb of force when depressed.
5. Before removing the stand from the vehicle, make sure the vehicle is secure or properly supported by another means. Removal of the stand can be accomplished by turning the spin handle in a counterclockwise direction until the stand's saddle is clear of the vehicle.

## MAINTENANCE

1. Always store the stand in a well protected area where it will not be exposed to inclement weather, corrosive vapors, abrasive dust, or any other harmful elements. The stand must be cleaned of water, snow, sand or grit before using.
2. Use a general purpose grease to lubricate the extension screw and foot pedal linkage if so equipped.
3. Every stand owner is responsible for keeping the stand labels clean and readable. Use a mild soap solution to wash external surfaces of the stand. If product labels are lost or not legible, contact Titan Lifts for replacements.
4. Inspect the stand before each use. Do not use the stand if any piece is cracked, broken or bent. Do not use the stand if it has loose or missing hardware or components, or is modified in any way. Take corrective action before using the stand again. Premature wearing or damage to components caused by loose or missing hardware is not eligible for warranty consideration.

### **PLEASE READ THE FOLLOWING CAREFULLY**

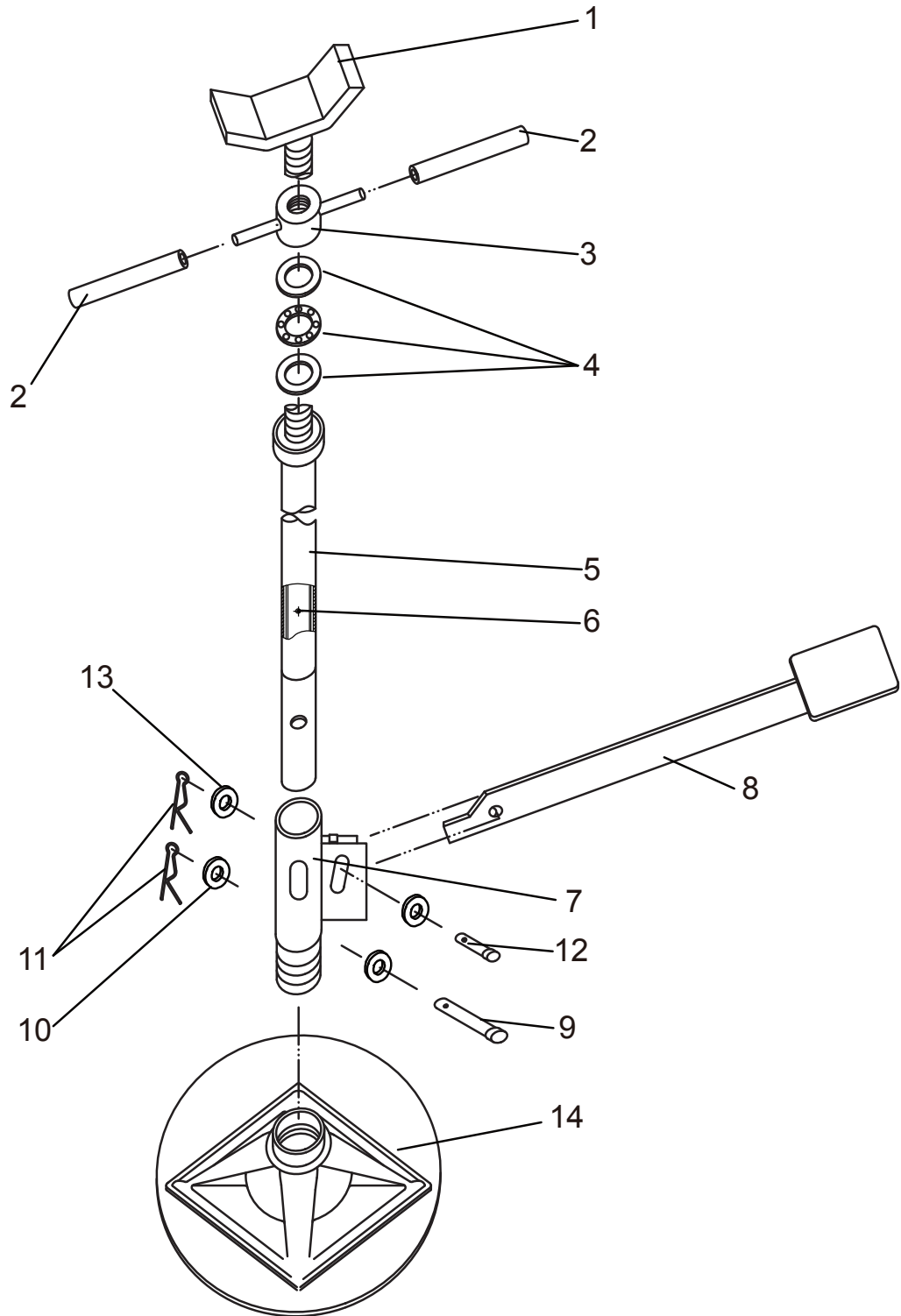
THE MANUFACTURER AND/OR DISTRIBUTOR HAS PROVIDED THE PARTS LIST AND ASSEMBLY DIAGRAM IN THIS MANUAL AS A REFERENCE TOOL ONLY. THE MANUFACTURER OR DISTRIBUTOR DOES NOT MAKE ANY REPRESENTATION OR WARRANTY OF ANY KIND TO THE BUYER THAT HE OR SHE IS QUALIFIED TO MAKE ANY REPAIRS TO THE PRODUCT, OR THAT HE OR SHE IS QUALIFIED TO REPLACE ANY PARTS OF THE PRODUCT. THE MANUFACTURER AND/OR DISTRIBUTOR EXPRESSLY STATES THAT ALL REPAIRS AND PARTS REPLACEMENTS SHOULD BE PERFORMED BY CERTIFIED AND LICENSED TECHNICIANS, AND NOT BY THE BUYER. THE BUYER ASSUMES ALL RISK AND LIABILITY ARISING OUT OF HIS OR HER REPAIRS TO THE ORIGINAL PRODUCT OR REPLACEMENT PARTS THERETO, OR ARISING OUT OF HIS OR HER INSTALLATION OF REPLACEMENT PARTS THERETO.

Product's Serial Number: \_\_\_\_\_

**Note:** If product does not have a serial number, record the month and year of purchase instead.

**Note:** Some parts are listed and shown for illustration purposes only, and are not available individually as replacement parts.

# PARTS DIAGRAM



NO.	DESCRIPTION	QTY	NO.	DESCRIPTION	QTY
01	Saddle Assembly	1	08	Foot Pump Assembly	1
02	Rubber Cover	2	09	Pin	1
03	Adjusting Handle	1	10	Washer Ø16	2
04	Bearing Assembly	1	11	B Pin	1
05	Post	1	12	Pin	1
06	Pin	1	13	Washer Ø12	2
07	Connecting Rod	1	14	Base	1



The **Titan 2 Post lifts and 4 Post lifts** are backed by a standard **1 year** replacement parts warranty and a **5 year** structural warranty from the date of purchase, to the original purchaser only. The **1 year** replacement parts warranty covers power units, hydraulic cylinders, and all other assembly components such as, but not limited to: turn plates, slip plates, cables, chains, valves, switches etc. This does not cover normal wear items such as but not limited to rubber lifting pads and nylon slide blocks. **Titan HD2P-9000ACE-D and HD2P-9000AFE 2 Post lifts** are backed by a **2 year** replacement parts warranty and a **5 year** structural warranty from the date of purchase, to the original purchaser only. The **2 year** replacement parts warranty covers power units, hydraulic cylinders, and all other assembly components such as, but not limited to: turn plates, slip plates, cables, chains, valves, switches etc. This does not cover normal wear items such as but not limited to rubber lifting pads and nylon slide blocks.

**Titan Mid Rise Scissor lifts** are backed by a standard **1 year** replacement parts warranty and a **5 year** structural warranty from the date of purchase, to the original purchaser only. The **1 year** replacement parts warranty covers power units, hydraulic cylinders, and all other assembly components such as, but not limited to: turn plates, slip plates, cables, chains, valves, switches etc. This does not cover normal wear items such as but not limited to rubber lifting pads and nylon slide blocks.

**Titan Standard Duty and Heavy Duty motorcycle lifts** are backed by a standard **1 year** replacement parts warranty from the date of purchase, to the original purchaser only. The **1 year** replacement parts warranty covers power units, hydraulic cylinders, pneumatic cylinders, and all other assembly components such as, but not limited to: cables, caster wheels, valves, switches, wheel vises etc. This does not cover normal wear items such as but not limited to rubber wheel vise pads.

**Titan Bulldog Moto Cradle Wheel Chock** is warranted for replacement parts, only to the original purchaser, for a period of **2 years** from the date of purchase.

**Titan shop equipment products and accessories** are warranted for replacement parts only to the original purchaser for a period of **90 days** from the date of purchase. This **90 day** replacement parts warranty covers products such as but not limited to: EZ mover jacks, Mini Jacks, tie down products, shop and Bulldog Moto Cradle Wheel Chock accessories, dollies, stands, Light Duty Motorcycle Lifts, etc.

For **all** warranty considerations, Titan Marketing, LLC will supply replacement parts only during the warranty period. The original purchaser is responsible for all shipping, handling, and any labor charges incurred. All defective parts must be returned to Titan for inspection and examination. Any parts that are found to be defective will be replaced or repaired to proper working order. Other items not listed above may be considered general wear parts and therefore, will not be covered under warranty. These warranties **do not** extend to **defects** caused by ordinary wear, abuse, misuse, shipping damage, improper installation, voltage or lack of required maintenance. Titan Marketing, LLC is **not** to be held responsible for any **failure** that results from an accident, purchaser/operator abuse, neglect, or failure to operate products in accordance with instructions provided in the owner's manual(s) supplied. Damage caused by rain, excessive humidity, corrosive environments or other contaminants are not covered under warranty. **THESE WARRANTIES DO NOT EXTEND TO ANY COSMETIC DEFECT NOT INTERFERING WITH EQUIPMENT FUNCTIONALITY OR ANY INCIDENTAL, INDIRECT, OR CONSEQUENTIAL LOSS, DAMAGE, OR EXPENSE THAT MAY RESULT FROM ANY DEFECT, FAILURE OR MALFUNCTION OF A TITAN MARKETING LLC PRODUCT OR THE BREACH OR DELAY IN PERFORMANCE OF THE WARRANTY.**



# WARRANTY REGISTRATION

In order to utilize the warranty on this Titan Lifts product, you must register your product with us. The simplest way to do this is to visit [TITANLIFTS.COM/WARRANTIES](https://www.titanlifts.com/warranties) and submit your information online. If you prefer to send your information through the mail, please fill out the form below and send this page to us at :

**Titan Lifts  
PO Box 7069  
Greenwood, IN 46142**

EQUIPMENT MODEL: \_\_\_\_\_ SERIAL NUMBER: \_\_\_\_\_  
TYPE OF POWER UNIT: \_\_\_\_\_ SERIAL NUMBER: \_\_\_\_\_  
DATE OF PURCHASE: \_\_\_\_\_  
PLACE PURCHASED: \_\_\_\_\_  
NAME: \_\_\_\_\_  
STREET: \_\_\_\_\_  
CITY, STATE, ZIP: \_\_\_\_\_  
PHONE: \_\_\_\_\_  
EMAIL: \_\_\_\_\_

OPT OUT OF PROMOTIONS



In order to receive your warranty, return this card or visit [TITANLIFTS.COM/WARRANTIES](https://www.titanlifts.com/warranties) within 30 days.





 **WARNING** 

The warnings, precautions and instructions in this manual cannot cover all possible conditions and situations that may occur. The operator must understand that the operator must supply common sense and examine caution factors when using this product to determine safety in all circumstances being used.



**TITAN MARKETING, LLC**

PO Box 7069 Greenwood, IN 46142  
1.888.908-4826 FAX (317) 215.2770  
[www.titanlifts.com](http://www.titanlifts.com)

**Patent No.: US 8,104,588 B2  
CA 2,729,670**

**Revision 1**